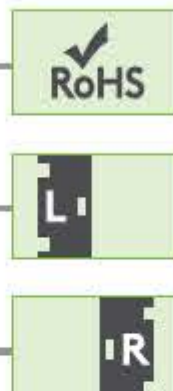


ROTARY LATCH (MINI)

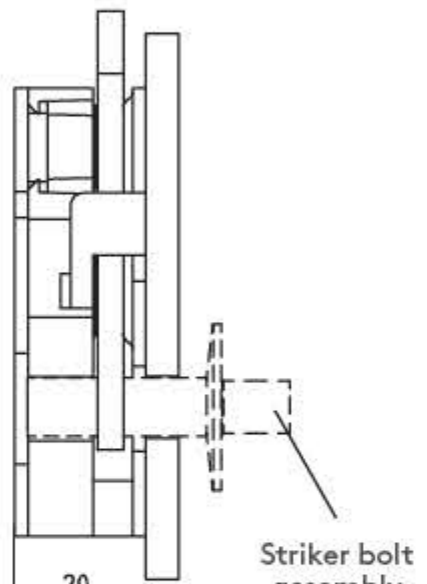
2800

BOTTOM



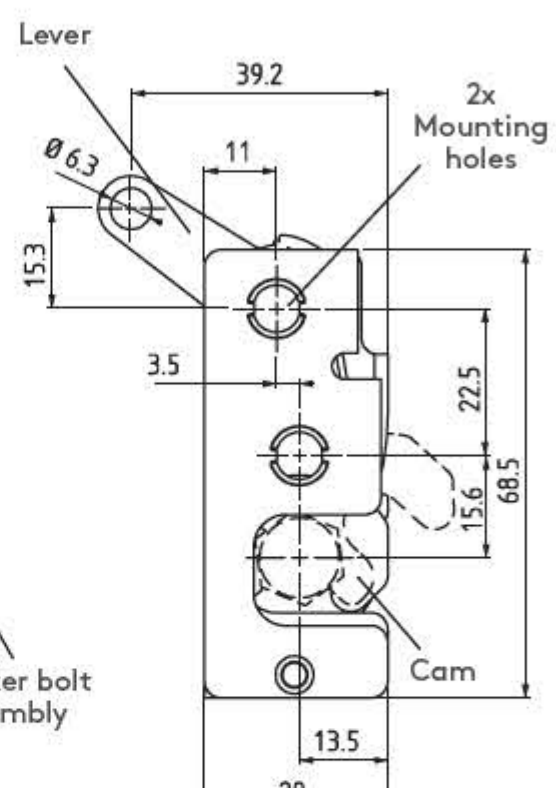
Bumper Version

Dimensions are same as standard version except as shown



(Left hand application)

Standard Version



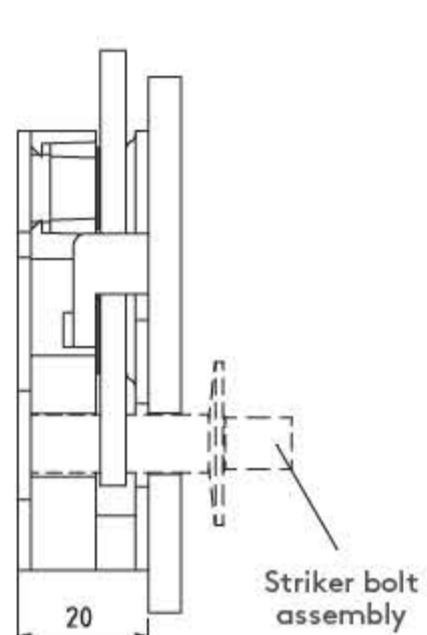
ROTARY LATCH (MINI)

TOP



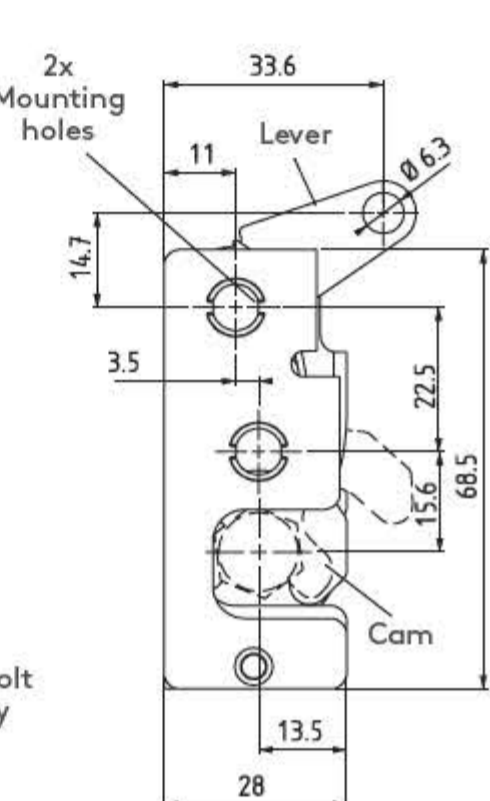
Bumper Version

Dimensions are same as standard version except as shown



(Left hand application)

Standard Version

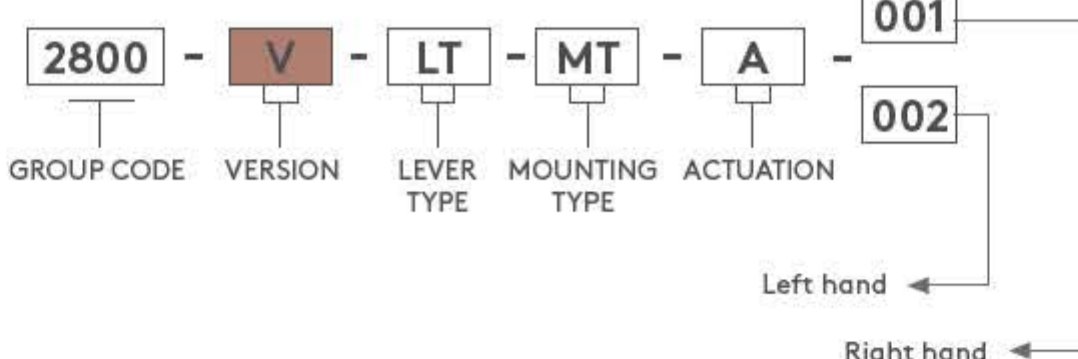


- Six different lever type
- Single or two stage actuation type
- Bumper version for vibrating conditions

MATERIAL
BODY: Steel
BUMPER: PA6

FINISH
Zinc Plated

PRODUCT CODE



VERSION	V
Standard	1
Bumper	2

LEVER TYPE	LT
Bottom	1
Top	2

MOUNTING TYPE	MT
Ø7,2	1
M6	2
1/4"	3

ACTUATION	A
Single	1
Two	2

2800

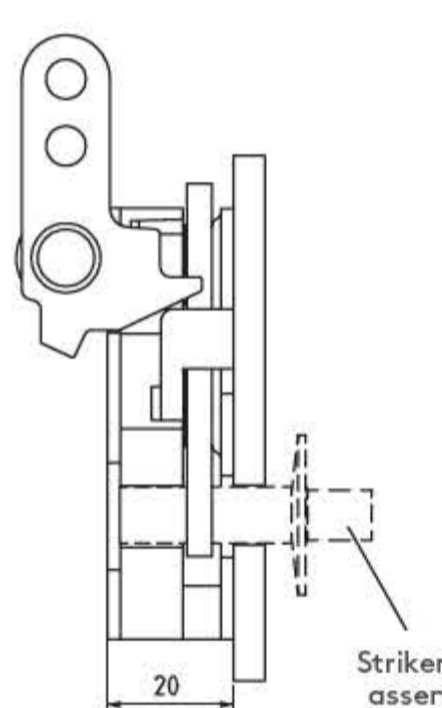
ROTARY LATCH (MINI)

IN LINE



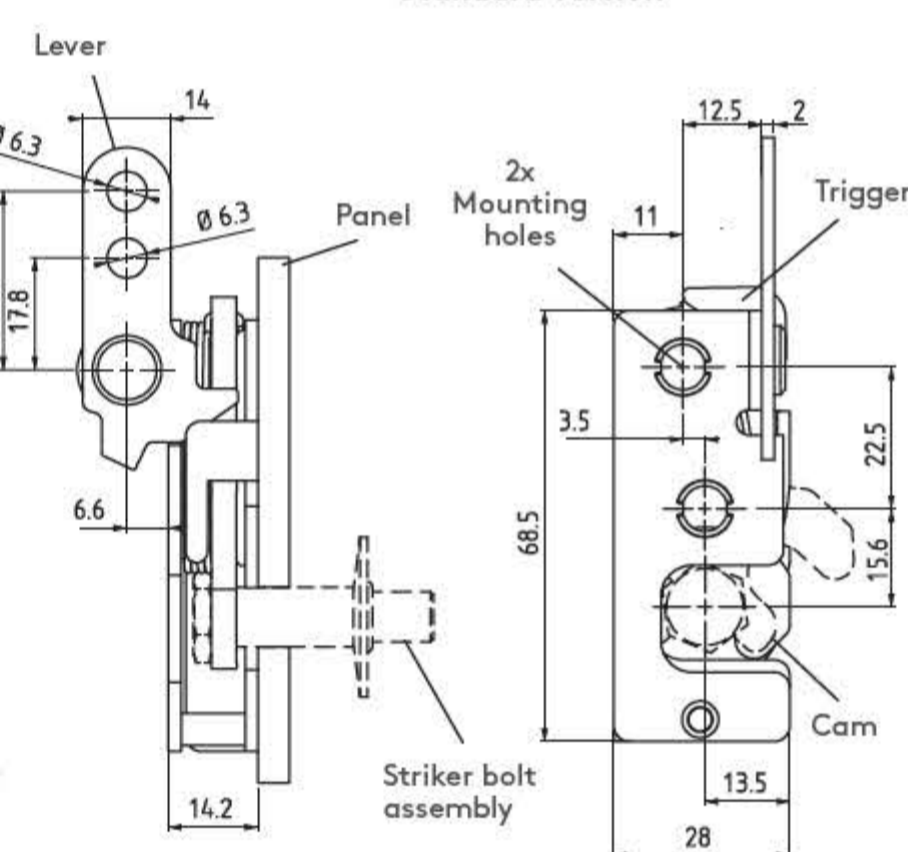
Bumper Version

Dimensions are same as standard version except as shown



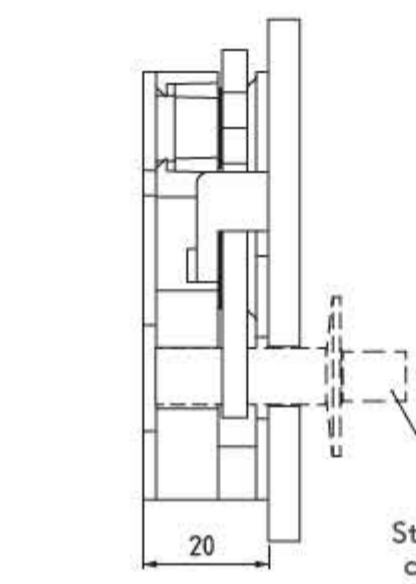
(Left hand application)

Standard Version



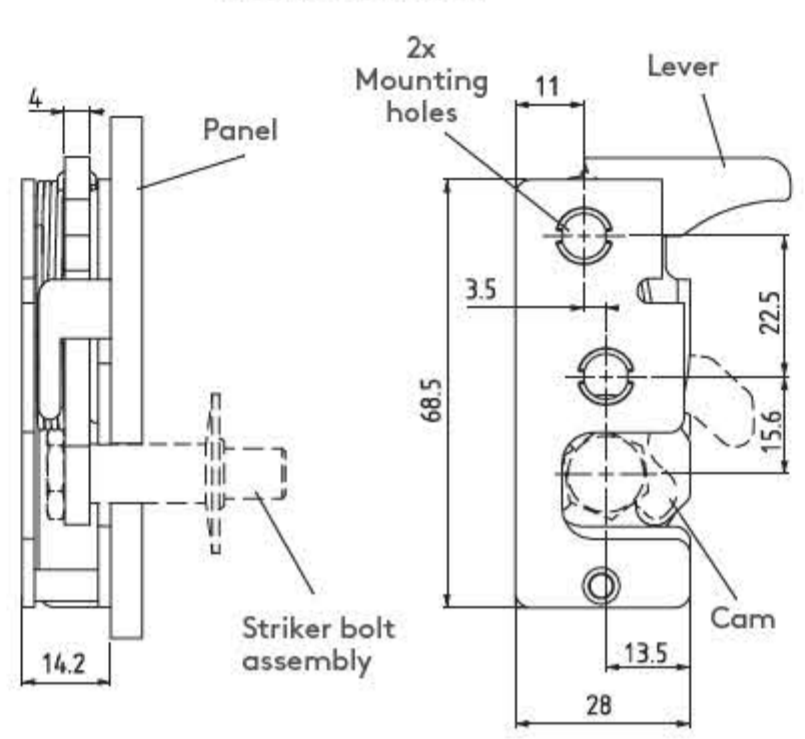
Bumper Version

Dimensions are same as standard version except as shown



(Left hand application)

Standard Version



ROTARY LATCH (MINI)

HAND ACTUATION

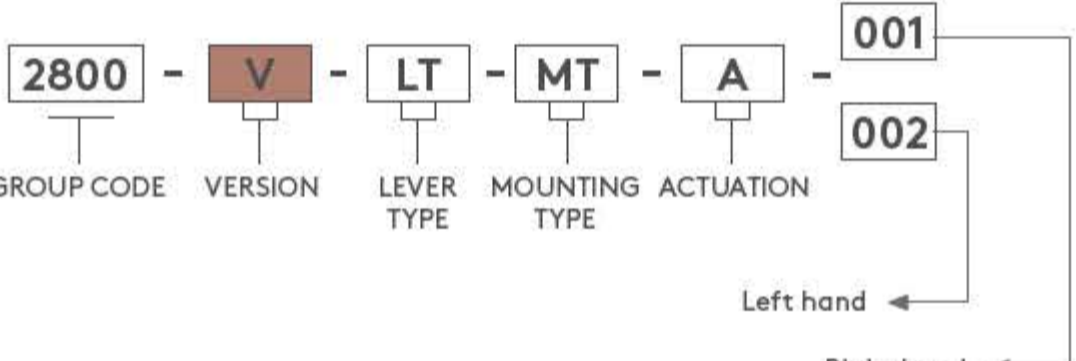


- Six different lever type
- Single or two stage actuation type
- Bumper version for vibrating conditions

MATERIAL
BODY: Steel
BUMPER: PA6

FINISH
Zinc Plated

PRODUCT CODE



VERSION	V
Standard	1
Bumper	2

LEVER TYPE	LT
In Line	3
Hand Actuation	4

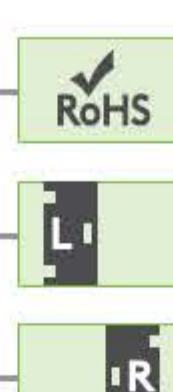
MOUNTING TYPE	MT
Ø7,2	1
M6	2
1/4"	3

ACTUATION	A
Single	1
Two	2

ROTARY LATCH (MINI)

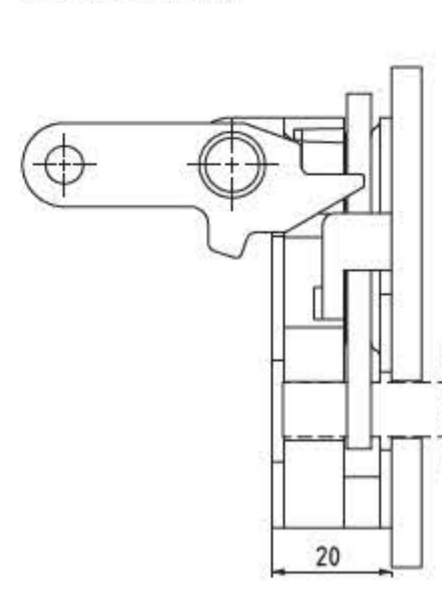
2800

PERPENDICULAR



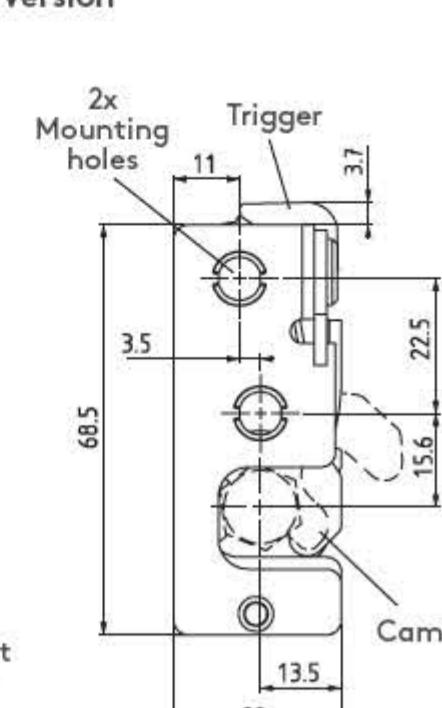
Bumper Version

Dimensions are same as standard version except as shown



(Left hand application)

Standard Version



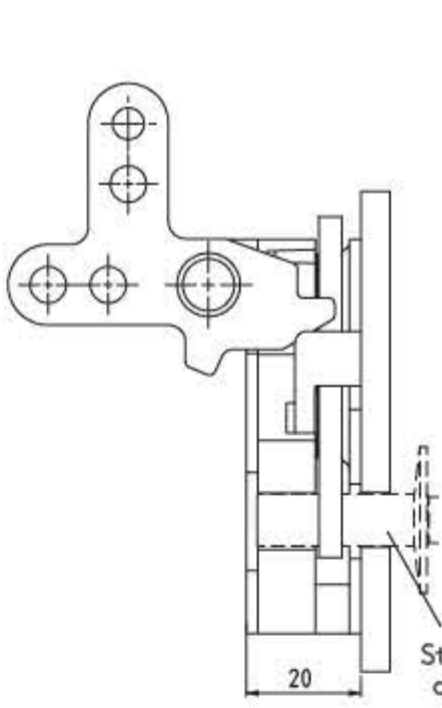
ROTARY LATCH (MINI)

TWO POINT



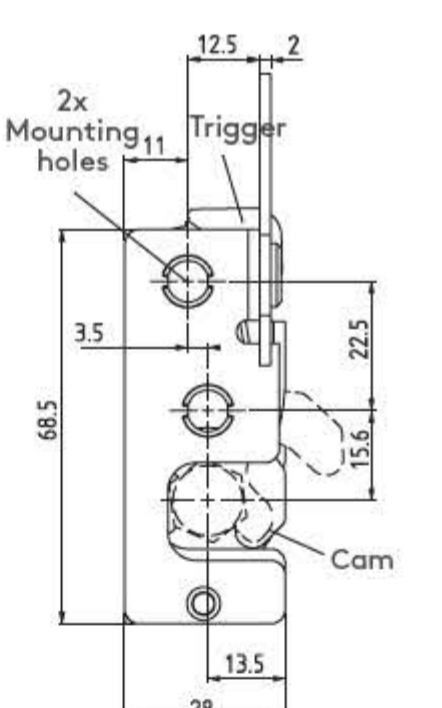
Bumper Version

Dimensions same as standard version except as shown



(Left hand application)

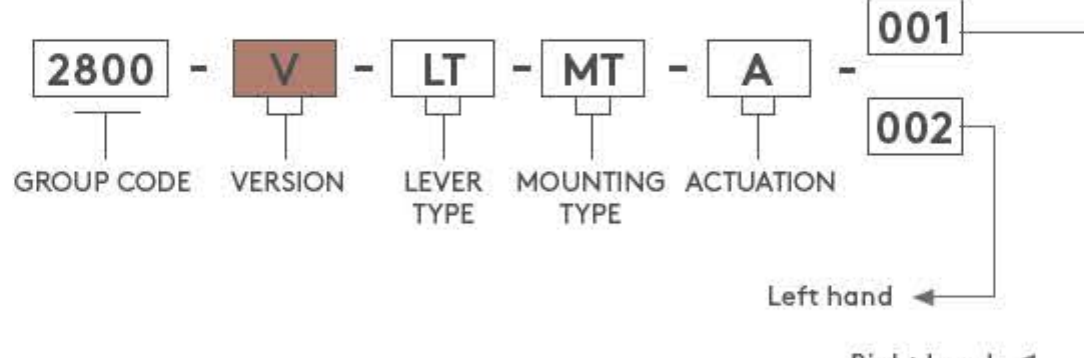
Standard Version



- Six different lever type
- Single or two stage actuation type
- Bumper version for vibrating conditions

MATERIAL
BODY: Steel
BUMPER: PA6

PRODUCT CODE



VERSION	V
Standard	1
Bumper	2

LEVER TYPE	LT
Perpendicular	5
Two Point	6

MOUNTING TYPE	MT
Ø7,2	1
M6	2
1/4"	3

ACTUATION	A
Single	1
Two	2

